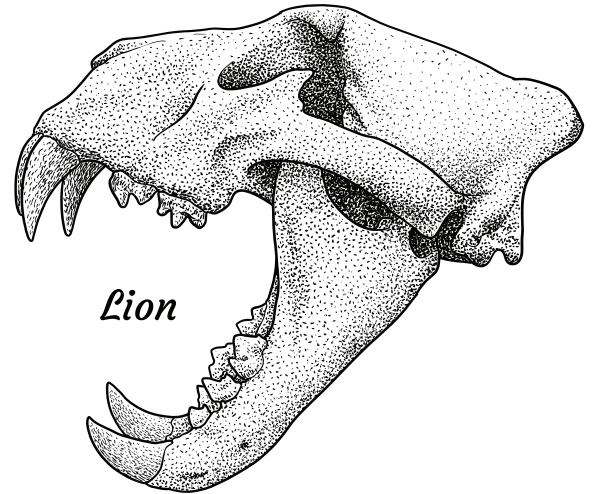
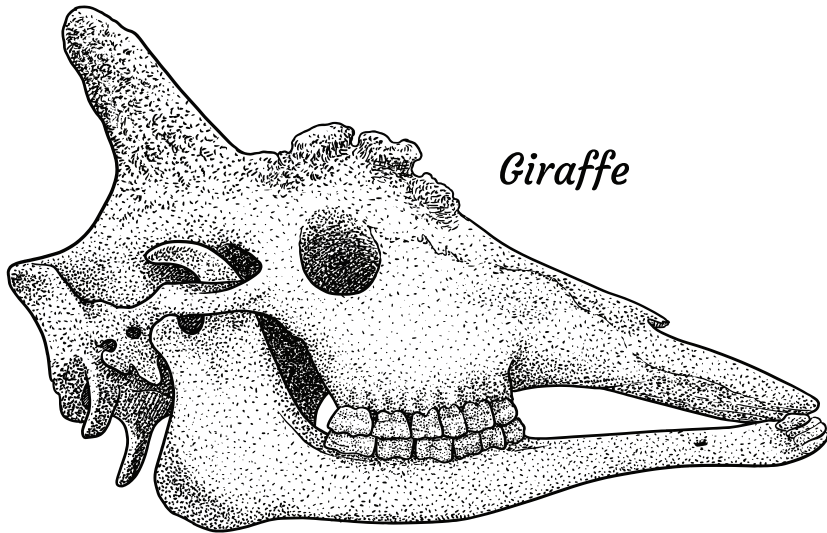


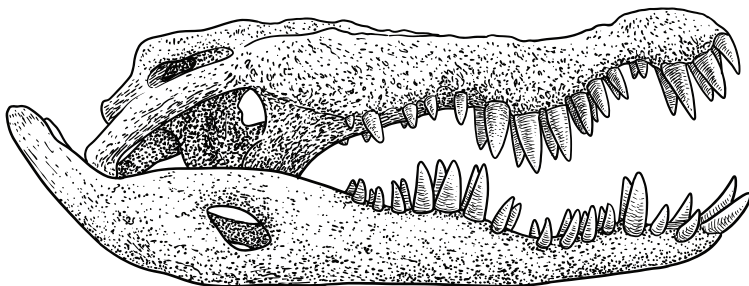


Teeth are an important part of all skeletons. They are the only part of our skeletons that we can see with our eyes and touch with our hands directly. Compare the teeth of the lion and the giraffe.



You can tell what different animals eat because of how their teeth are shaped. Flat wide teeth are for eating plants, and sharp pointy teeth are for eating meat. Humans have mostly flat teeth in the back, and somewhat pointy teeth in the front, but they are nothing compared to the teeth of big meat eaters like lions, or alligators! What animals have fangs? Do we have fangs?

*Crocodile*



Teeth are also the first part of our digestive system. They break our food into small enough pieces that we can swallow them. Imagine trying to eat an apple without teeth!



## Unit 1 Lesson 6 – TEETH

Date:

**Objectives** By the end of this lesson, the children should be able to:

- Identify and palpate the teeth
- Know what teeth do
- Know that the teeth are part of the digestive system
- Know that different shaped teeth have different functions
- Identify and palpate the mandible (jaw)
- Know how to take care of our teeth
- Know that teeth are part of a complete skeleton, but they are not bones
- Know that teeth are the hardest part of our bodies

### Materials

- TEETH page from My Body Project
- Teeth Model printout
- Glue, tape or stapler and staples
- Mini marshmallows
- Scissors
- Dry erase marker (optional)
- Sheet protector (optional)

### Lesson Prep

- Cut out TEETH (My Body Project)
- Cut out teeth Model - 1 per child
- Hide toothbrush, toothpaste and dental floss
- Listen to the teeth song to familiarize yourself with the song and make some movements to it
- Cue up teeth dance song: see options under Notes

**Greeting Routine** (for more than 2 children) Free Play until everyone arrives

### Activity in Motion "BRUSH TEETH SONG"

Cue up the "Brush Teeth Song" (2 options). Try to get kids to act out some motions for "up and down," "side to side," and "back to front," etc. You can "free style" between both songs if you like.

## Lesson

“Are teeth part of a skeleton? Yes they are. Are teeth bones? Hmmmm. No, they are not. What do our bones do? wait for it) Yes, they give us our shape. Do teeth do that? No.... What else do bones do? They make our blood. Teeth do not make blood. Lastly, our bones protect vital organs like the brain, nerves, heart and lungs. Do teeth do that? No. What do our teeth do for us? ” They chew our food, yes. Can you imagine trying to eat an apple without teeth? Or swallowing a cookie without chewing it? Ouch! Our teeth are the hardest part of our bodies. Can you guess why?

“What do you do to take care of your teeth? Do you brush them with toothpaste? (Do a small demonstration but use invisible toothpaste and toothbrush and ask kids to pretend they have invisible toothbrushes and toothpaste so they can follow along. Be sure to get front and back teeth. and don't forget to make the sound effects!) Now ask them to palpate their teeth and gums. Have hand sanitizer at the ready. They should be able to feel the flat molars and sharper front teeth. Explain the differences between them and what they do. “Our teeth fall out sometimes, yes? What makes them fall out?” (Discuss cavities and the fact that our teeth fall out of our jaw if we don't brush them.) “Brushing them keeps our gums healthy too. Our gums are the ‘glue’ that hold our teeth in our jaw bone so they don't get loose and fall out.”

## Chant ECHO GAME

I'm going to say the name of a bone, and you all are going to be my echo! If I say it LOUD you say it LOUD. If I say it SOFT, you say it SOFT. Okay? “ Touch your jaw and say: ”MANDIBLE, MANDIBLE, MANDIBLE, TEETH!” Have them repeat it back to you. Experiment with a silly tone, a growly tone etc. Say it in as many different ways as you can. (While you are chanting, review the “HUMERUS, HUMERUS, RADIUS and ULNA”, ‘VERTEBRAE” , “CRANIUM” and “CARPALS ,METACARPALS, PHALANGEES” chants too.)

## My Body Project

Have each child identify and paste the TEETH to the MADIBLE of the skull on the bones side. Be sure to point out that the teeth are not bones but are held in the skull by the MANDIBLE.

## Activity in Motion "FUNNY FACES"

Play the “Copy Cat” game but with funny faces. When it's the teacher's turn, make sure to stick out your tongue, roll the tongue, move the jaw from sided to side and forward and back. The kids can do a funny dance to go with their funny face if they want to.

## Optional Activity "TEETH MODEL"

See optional activities page for instructions and materials.

## Optional Activity "BRUSH BROTHER'S TEETH"

See optional activities page for instructions and materials.

## Lesson Review

"Our teeth look and feel like bones, but are they bones? No.... that's correct. They are the hardest part of our bodies. Why is that? What do our teeth do for us? They chew our food and prepare it for the stomach. Our teeth are the 1st part of our digestive system, which takes our food and turns it into poop! What are the ways we take care of our teeth? How can we take care of our gums? Our gums help hold our teeth in our skull, and the part of our skull that the teeth are attached to is called the MANDIBLE. Everyone move your MANDIBLE for me (or your jaw). Great!"

## Notes

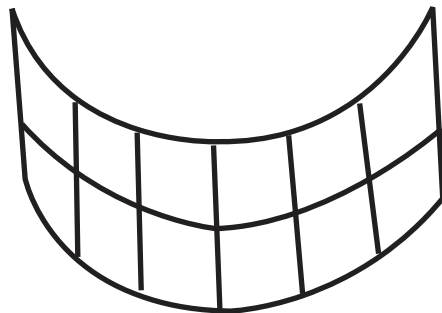
Teeth Dance Song Options:

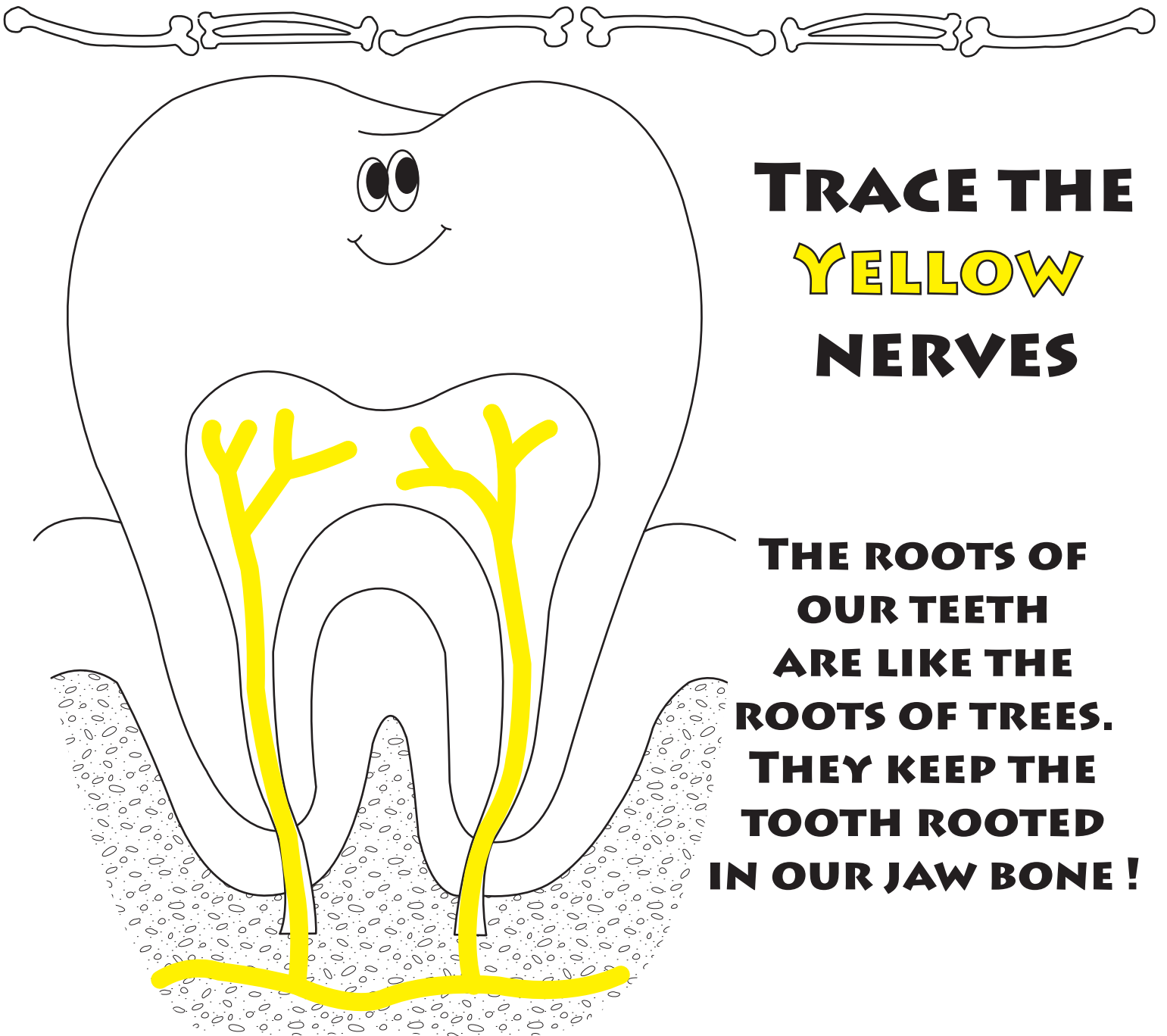
[https://www.youtube.com/watch?v=wCio\\_xVlgQ0&t=1s](https://www.youtube.com/watch?v=wCio_xVlgQ0&t=1s)

or

<https://www.youtube.com/watch?v=3X4Udn7lbuY>

# My BODY PROJECT





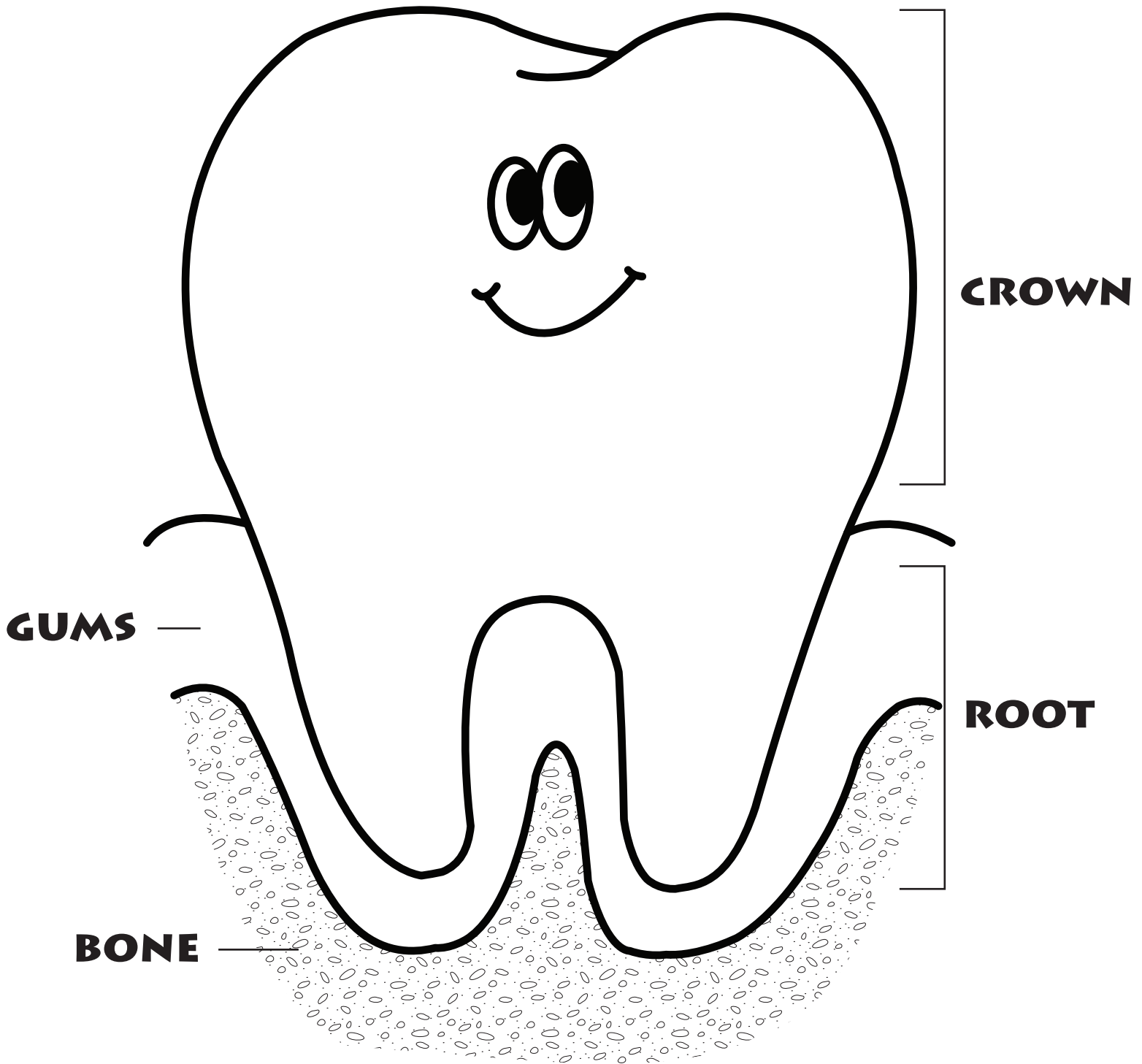
# **TRACE THE YELLOW NERVES**

**THE ROOTS OF  
OUR TEETH  
ARE LIKE THE  
ROOTS OF TREES.  
THEY KEEP THE  
TOOTH ROOTED  
IN OUR JAW BONE !**

**ON THE OUTSIDE OUR TEETH ARE HARD AND  
DON'T FEEL MUCH, BUT ON THE INSIDE, OUR  
TEETH ARE SOFT. THIS IS WHERE THE NERVES  
COME IN THROUGH THE BONE. IF WE BREAK A  
TOOTH DOWN TO THE NERVES, IT REALLY HURTS!  
CAVITIES HURT TOO WHEN THEY REACH THE  
MIDDLE OF OUR TEETH.**



**COLOR THE GUMS PINK AND  
THE BONE YELLOW**

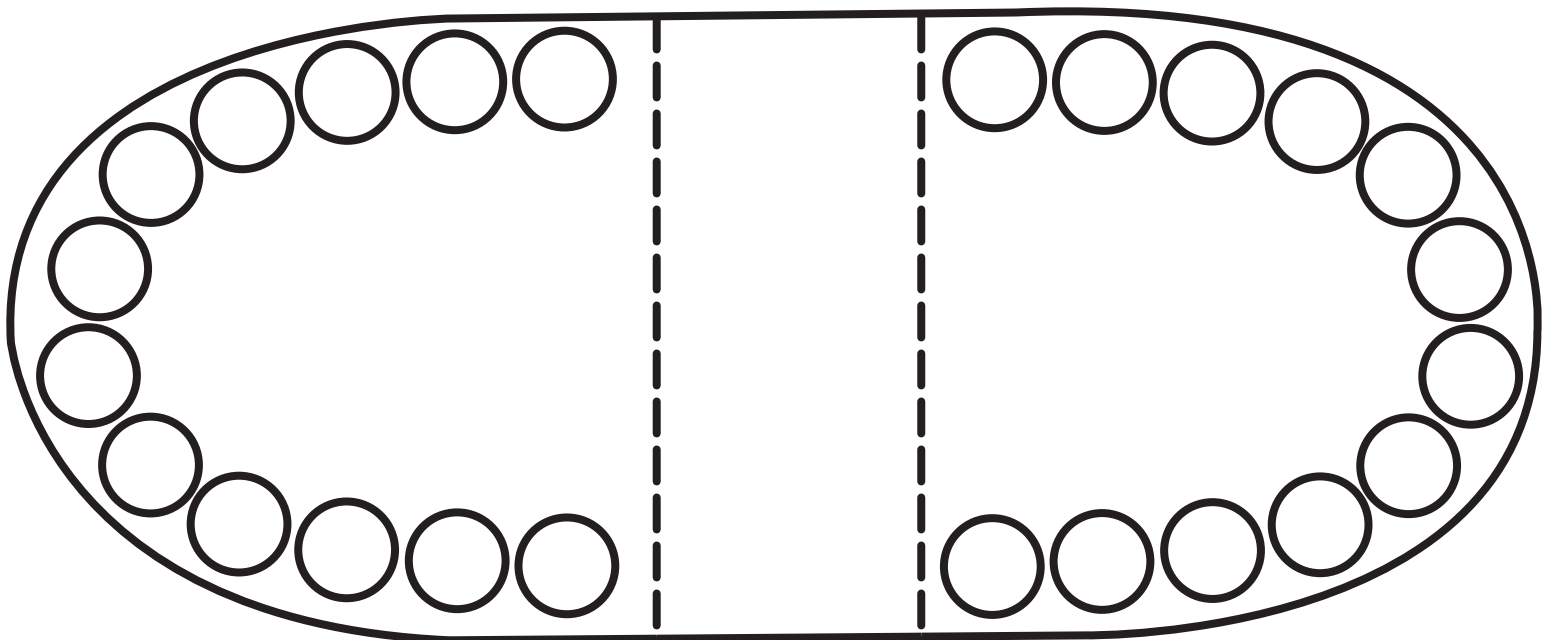


**REMEMBER: OUR GUMS HOLD OUR TEETH IN  
OUR JAW BONES LIKE GLUE!**

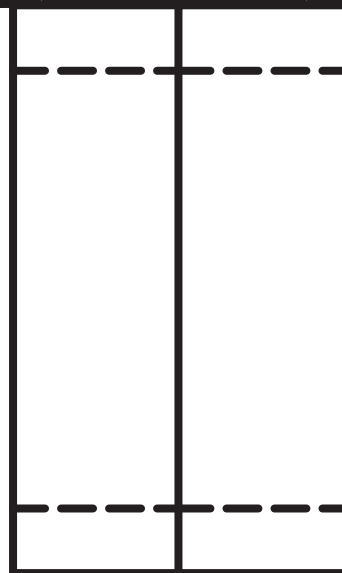




**CUT OUT MOUTH MODEL. FOLD ALONG DOTTED LINES AND GLUE MARSHMALLOWS TO CIRCLES. USE PLENTY OF GLUE AND GIVE PLENTY OF DRY TIME. PRINT ON CONSTRUCTION PAPER AND ADD A TONGUE IF DESIRED. TAPE OR STAPLE "HANDLES" TO TOP AND BOTTOM OF MOUTH TO MAKE A PUPPET.**



**MAKE SURE TO EXPLAIN HOW THE "MANDIBLE" IS THE BONE OF THE MOUTH THAT HOLDS THE TEETH IN OUR SKULLS.**





**PLACE PAGE IN SHEET  
PROTECTOR. COLOR TEETH  
WITH BLACK DRY ERASE  
MARKER, THEN USE OLD  
TOOTHBRUSH (OR ERASER,  
Q-TIP ETC.) TO "CLEAN"  
BROTHER'S DIRTY TEETH!**

